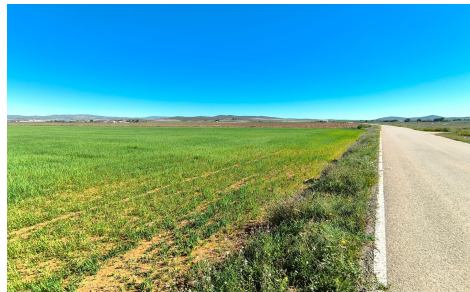
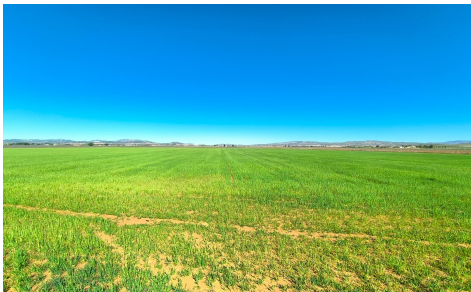


LCS455875675



## Land a Plots in Yecla

€67,500



0



0



5m<sup>2</sup>



49,754m<sup>2</sup>



N/A

Agricultural & Building land near Yecla. Five hectares of fertile land, suitable for growing crops (olives, almonds, vine, peaches, apricots, cherries, pears, pistachios, vegetable), for cattle, sheep, or horse pastures, or for building a house, offering an interesting development/investment opportunity, and a self-sufficient lifestyle. Previously used for growing cereals, this currently fallow land has an irrigation water connection, and water rights. Located in a tranquil rural area of Yecla, it has a good access via tarmac road. Electric connection is not near. The terrain is mostly flat. You can build up to 5% of the land size, certificate of construction comes with the plot and is a condition of purchase....(Ask for More Details!)