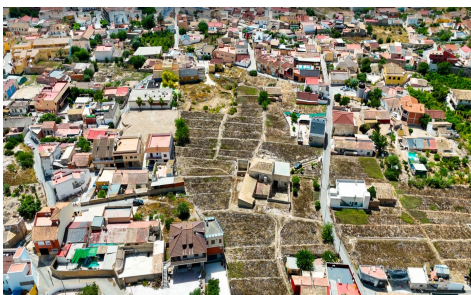


LCS52486724



**Other in Orihuela**

**€850,000**



7



1



431m<sup>2</sup>



12,441m<sup>2</sup>



N/A

We present this excellent investment opportunity, particularly attractive for developers, thanks to the potential to build multiple residential units and resell them, as well as for alternative uses such as rural tourism, event venues, or leisure projects. Large 12,441 m<sup>2</sup> estate located in Orihuela, just 2 km from the town center. Set at the foot of the Sierra de Orihuela, the property enjoys an elevated, non-floodable position with open views across the Vega del Segura and surrounding mountains. The land is distributed as follows: 3,488 m<sup>2</sup> of residential urban land within the hamlet, suitable for development of up to two floors plus basement and mezzanine. Full plot occupation is permitted...(Ask for More Details!)