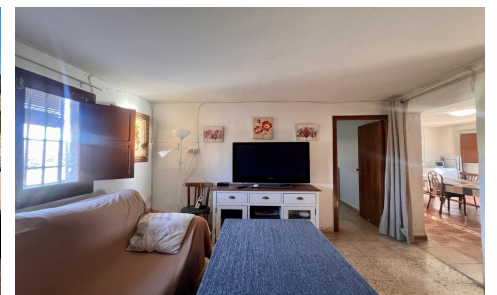


LCS412967659



Country House in Jumilla

€150,000



4



1



162m²



13,176m²



N/A

Located in the countryside of Jumilla, this charming country property offers space, privacy and beautiful surroundings, while still enjoying good access and close proximity to the motorway. It is an ideal home for those looking to enjoy rural living with practical comforts and plenty of outdoor space. As you arrive at the property, you are welcomed by a generous fenced plot of approximately 3,800 m² surrounding the house, providing privacy and security. The entrance area includes a covered car porch, offering convenient parking and protection for vehicles. Entering the home, you find a comfortable and practical layout. The property features two living rooms, providing flexible spaces for relaxing, entertaining guests...(Ask for More Details!)