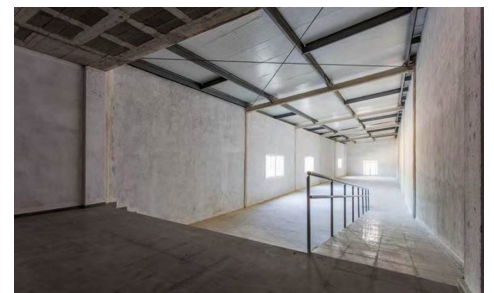
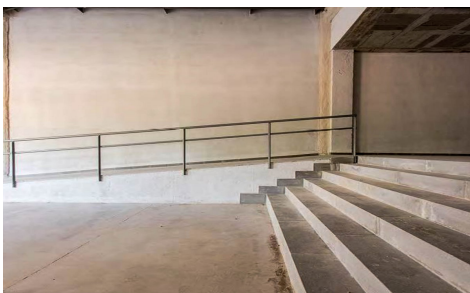


LCS7998977

Commercial in Son Servera

€3,000,000



0



4



3,042m²



5,184m²



N/A

Located in a strategic area of the Son Servera-Cala Millor highway, this large industrial warehouse offers excellent accessibility and visibility, making it an ideal option for both businesses and investors. Its proximity to two of the most important urban centers in the region ensures a constant flow of clients and suppliers. . . The warehouse is divided into four large commercial premises, distributed over two floors, each with specific characteristics that ensure its functionality and versatility. . . Low level:. . Commercial Premises: Two premises of 370 m² and 280 m² respectively. An additional storage space of 280 m². Each location has a 52 m² covered porch, ideal for various...(Ask for More Details!)